

DESIGN FASTER BUILD SMARTER

Accelerates new product design and transforms
equipment capabilities



CLIPZIN™

If you're an electronics designer or engineer, then you need to know about Clipzin™.

Clipzin™ is a PCB-mounted edge connector that allows simple fixing of PCB modules to a host PCB.

Clipzin™ removes the need for a connector on the module, instead mating directly with the PCB by making use of castellated pads along the edges to provide the connection. Extensively tested, Clipzin™ facilitates easy and rapid connection and disconnection. A retention clip ensures the board will not shake free during use.

Clipzin™ can be used in both development and production. Available in 20-, 17-, 8- and 6-way variations to fit Raspberry Pi™ Pico and Arduino™ Nano Connect, as well as a myriad of sensor, communications, AI and processing modules, Clipzin™ is a hugely attractive option for many applications across a wide range of industries.

BENEFITS:

- Ultimate flexibility for customisation of products.
- Easy means to mount and connect single board computer modules and allow upgrades.
- Semi-permanent locking mechanism, secure yet easily undone for reconfiguration or servicing.
- Repeatable mating/unmating process, ideal for prototyping and manufacture.
- Reduces manufacturing complexity with no through-hole soldering.
- Compact.
- Mounts on one PCB only, making use of castellated contacts for a reliable connection that can streamline manufacturing.
- Retention clip to keep the board securely in place, even during extreme vibration.
- Simple in-field upgrades and repairs via clip out/clip in functionality – no tools needed.
- RoHS compliant.

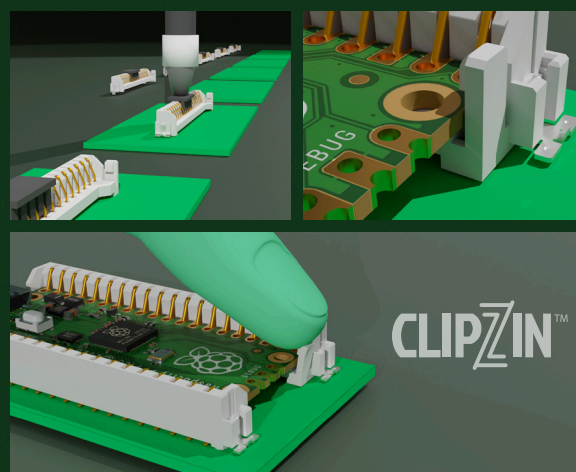
Where Clipzin™ can make a real difference:



- Automotive
- Industrial manufacturing
- Renewable energy
- Robotics and automation
- Consumer goods
- Smart home technology
- Internet of things
- Development boards

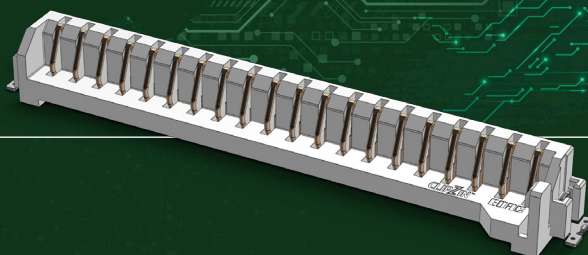
Specification:

Insulator Material	LCP + 300GF, UL 94V-0
Terminal Material	Phosphor Bronze
Terminal Plating	Contact Area: Gold Flash Solder Tail Area: Tin Plating All Over Nickel Under Plating
Current Rating	1A Max/Contact
Voltage Rating	5V DC/Contact
Standard Operating Temperature	-40°C to +85°C
Reflow Soldering Temperature	+260°C, 10 Seconds Max
Insertion/De-insertion Cycles	50 (optional up to 500)
RoHS Compliant	Yes
Type	SMT



**DESIGN FASTER
BUILD SMARTER**

CLIPZIN™



Contact us or visit our website for further information:

+44 (0)1933 427300 | enquiries@edaceurope.net | www.edac.net/series/299

EDAC EUROPE